

How To Begin Walking a New Path...

1. Obtain a New Path CCS Counseling Application Packet. You may pick up a packet at the First Baptist Church & New Path CCS Office most weekdays between the hours of 9 AM and 5 PM. Or you can download a pdf of the forms at the First Baptist Church website:



www.fbcgoshen.org.

Click on the New Path CCS button then click on the New Path Forms button under the New Path Menu. Be sure to download all three (3) forms. Or you may call the office and the forms can be obtained by fax, email attachment or postal mail.

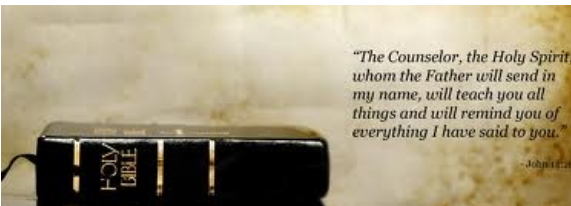
2. Complete all 3 forms in the Application Packet:

- Counseling Agreement Form
- Situation History Form
- Background Information Form (both sides)

Be sure to sign the Counseling Agreement Form. A parent or legal guardian must co-sign for anyone under 18 years of age.

3. Return the completed Forms to the Office personally, via mail, fax or email attachment. Use the contact information provided on the back of this brochure.

4. You will receive a phone call to schedule an appointment as soon as your case is reviewed and an agreeable time slot can be arranged.



Notes:

® New Path Christian Counseling Services is a non-profit, IRS Code 501(c)(3), limited liability corporation (llc), and is an affiliate ministry of the First Baptist Church of Goshen, Indiana.

1 Examples: the word "admonish" in Romans 15:14, 1 Corinthians 4:14, Colossians 1:28 & 3:16.

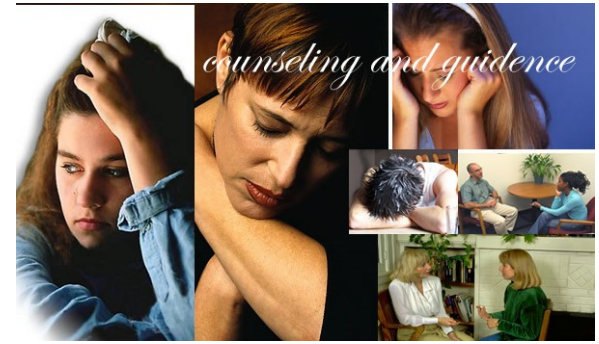
2 The Association of Certified Biblical Counselors (ACBC) is a training and certifying organization only. New Path CCS as an organization is not currently certified by, endorsed by, nor connected with the ACBC in any official capacity.



First Baptist Church of Goshen & New Path Christian Counseling Services

1011 - S. Indiana Ave.
Goshen, IN 46526-3809
Phone: (574) 533-3139
Fax: (574) 533-3130
Email: church@fbcgoshen.org
Web: www.fbcgoshen.org

(published 06/11. revisions 01/14, 05/14, 12/15)

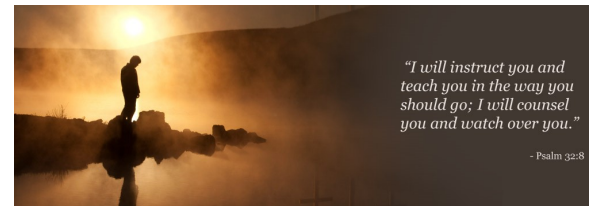


*Looking for some direction
in life?
Why not try walking a
New Path?*



Located at the
First Baptist Church
1011 S. Indiana Ave.
Goshen, IN 46526
www.fbcgoshen.org

Open Mondays
3:30-9:00 PM
By Appointment Only
Phone
(574) 533-3139



*"I will instruct you and
teach you in the way you
should go; I will counsel
you and watch over you."*

- Psalm 32:8



Life is difficult...

- ☑ Earning a Living
- ☑ Providing for Family
- ☑ Paying Bills
- ☑ Striving for good Health
- ☑ Making major Decisions
- ☑ Maintaining a Marriage
- ☑ etc., etc., etc.

Often these and other difficulties like:

- Abuse
 - Addictions
 - Divorce
 - Illness
 - Depression

can overwhelm us leading to a variety of emotional, spiritual, psychological and even physical personal and inter-personal problems.



The results can be devastating:

- Increased Healthcare Costs
- Broken Marriages & Homes
- Loss of Jobs & Careers
- Physical Abuse & Suicide
- Hopelessness in Life... and more.

Does life have to be like this?

Must people live each day in depression and misery?

Must we wander down the path of life without reliable direction or guidance?

Is there no hope for a better life or future?



There Is Hope!

Hope can be found in Bible Based Counseling!

So exactly what is Bible Based Counseling?

Bible Based Counseling is a model of counseling that finds its foundational therapies based on the truths taught in the Bible. It is also called "Nouthetic Counseling" (pronounced new-thet-ick) because it comes from the Bible Greek word "noutheteo"¹ (pronounced new-thet-eh-o) which means "to put into mind". It would compare to our English word "instruct", but also contains the added emphasis of warning of incorrect thinking and showing the right or a better way of thinking that will positively affect life. So Bible Based Counseling presents Bible answers to the problems people face.



At New Path Christian Counseling Services all of our counselors are lay-people who volunteer to be professionally

trained in Bible Based Counseling following the Nouthetic model. All New Path counselors are actively involved in a rigorous program that includes:

- ☒ 50+ hours of college level classroom education,
- ☒ 50+ hours of case observation and mentoring,
- ☒ 25+ hours of annual continuing education,
- ☒ Certification in various counseling disciplines.

New Path Christian Counseling Services is directed by Dr. Gregory Lanzen, who holds an earned Doctorate in Christian Counseling Psychology and is certified through the Association of Certified Biblical Counselors.²



At New Path CCS...

you will find a caring counselor to talk with who has been through some of the very same trials you may be facing right now.

Your counselor will listen to you and then study God's Word with you to find practical answers to your needs, for the Bible says,

"(God's) divine power has given us everything we need for life and godliness through our knowledge of Him," - 2 Peter 1:4 (NIV)

Your counselor will help you develop clear goals and practical steps to achieve those goals that are in line with the truths of God's Word, the Bible.

The counseling at New Path is offered as a ministry of the First Baptist Church of Goshen. There may be a small cash fee for session costs and/or study materials.



Counseling sessions are held on most Mondays between the hours of 3:30 and 9:00 PM, and are by appointment only. Each session lasts about one hour and will involve talking about your problems, Bible study to find the answers to your problems and a Guide To Growth Exercise Assignment to help you put the Bible learning into practice in your daily walk through life. Most counseling cases can be adequately resolved in about 8-12 sessions.

God says, *"Stand at the crossroads and look around; ask where the good, godly way is, and walk in it. Travel its path, and you will find rest for your soul."*

Jeremiah 6:16 (NLT/NCV)

Are you ready to begin walking a New Path in life? Turn the page to learn how! →

